



Abbeon Cal, Inc.

Industrial Plastic Working Equipment & Precision Instruments

Abbeon Cal, Inc.,

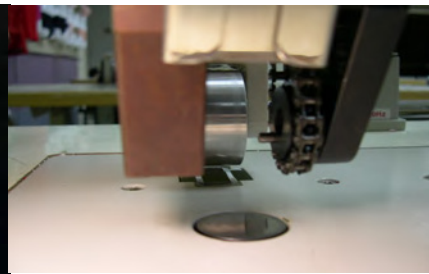
1363 Donlon Street Unit 1, Ventura, CA 93003-8387

800-922-0977 www.Abbeon.com

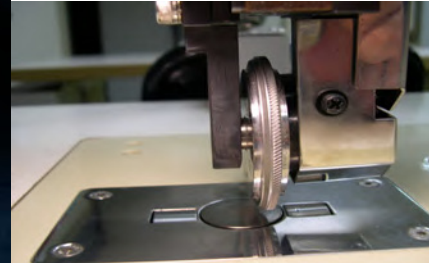
E-mail: abbeoncal@abbeon.com

RW3005 RW3007

Rotary Ultrasonic Machine



RW3005



RW3007

Applications:

Non-woven materials, technical textiles, automotive interiors, geo textiles, decorative lace, sports wear, gloves, tablecloths, disposable medical gowns, Covers for furniture and automobiles, window and shower curtains, Non-woven masks, decorative ribbon, material slitting.

Features:

- Uses Ultrasonic energy to weld, slit, cut, seal, emboss, seam (ultrasonic sewing), punch holes, etc.
 - New modern VCO style generator.
 - Speed controls mounted on head for operator convenience.
 - Pneumatic pattern and puller roller lifts.
- Sewing machine type treadle control for operation and pattern roller lift.
 - Separate latching pedal for pneumatic puller lift.
 - Accurate and durable alloy pattern roller.
 - One pattern roller included with each machine.
 - Many pre designed pattern rollers to choose from.
 - Adjustable side plate for leveling pattern roller.

Model	RW3005/RW3007
Output power	900W
Frequency	30KHz
Motor speed	0-18 m/min
Welding width	1.0-25 mm, Standard
Alternative Roller Width	ASK FOR INFO
Line source 60/50 Hz	1P 220V OR 110V / 12 AMP Supply
Working table (mm)	W1200*L550
Net weight	150Kg
Machine dimension (mm)	W1200*L550*H1010
Thickness of material	Depends on material

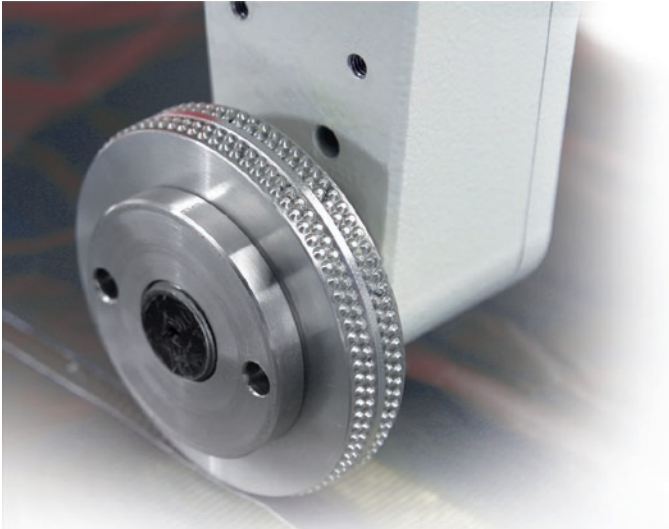
Subject to alterations in design, dimensions and weight



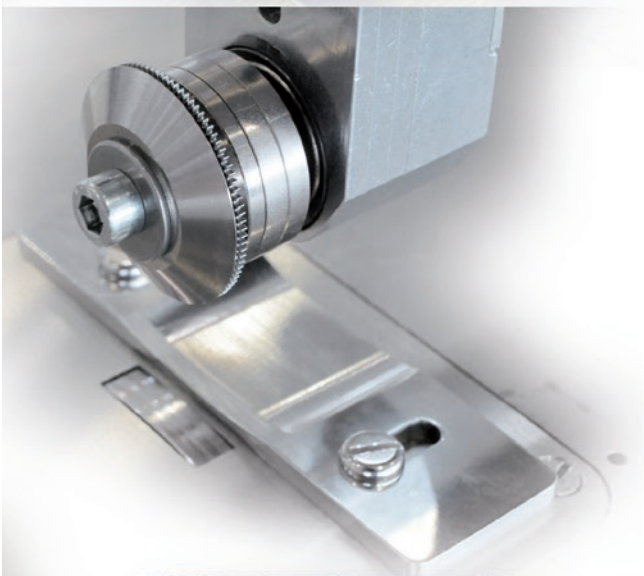
NOTE: THIS PHOTO IS FROM A 20 KHZ MODEL
30KHZ WILL DISPLAY 30KHZ

The anvil wheel determines the design of the seam

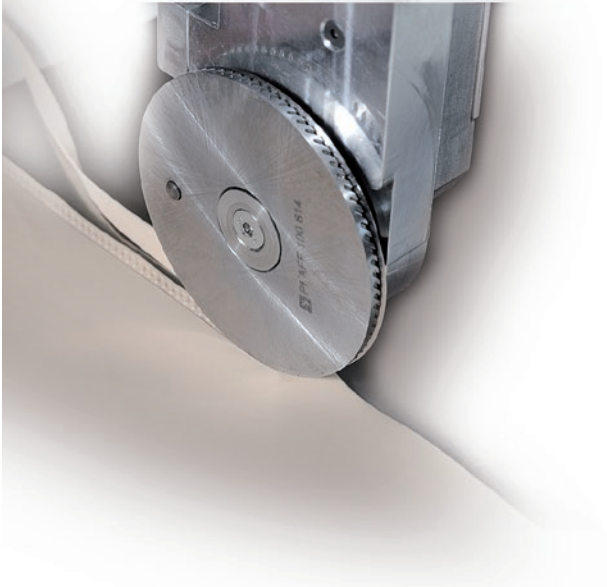
Individualize the design of your seam using the anvil wheel of the ultrasonic welding machine.



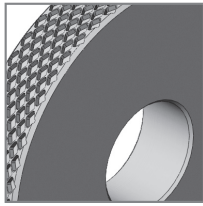
Standard-sized wheel



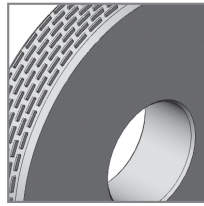
Extra-small anvil wheel to weld narrow radii and tight curves (e.g. welding bras or medical items)



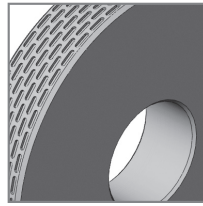
Two anvil wheels (one for cutting and sealing and the other one to realize the second weld seam)



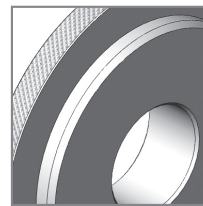
296-256 100-x5



296-256 102-x5



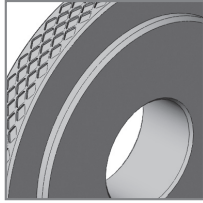
296-256 103-x5



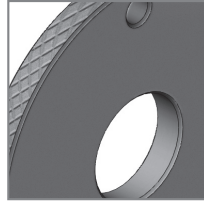
296-256 107-x5



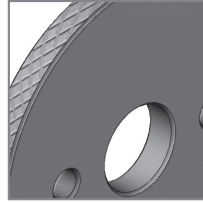
296-256 114-x5 *



296-256 116-x5



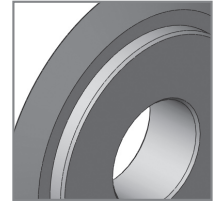
296-256 123-x5



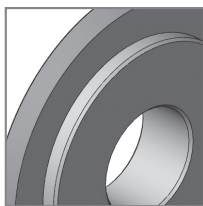
296-256 125-x5



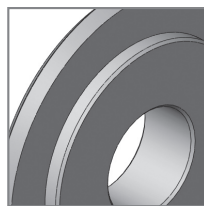
296-256 133-x5 *



296-256 282-x5 *



296-256 283-x5



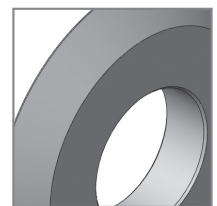
296-256 284-x5 *



296-256 285-x5 *



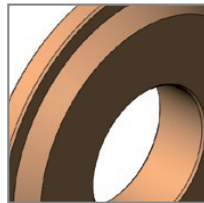
296-256 286-x5 *



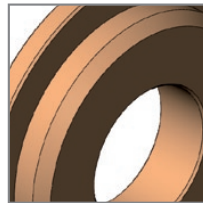
296-256 372-x5 *



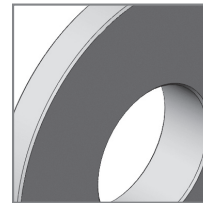
296-256 373-x5 *



296-256 375-x5



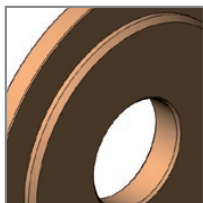
296-256 376-x5



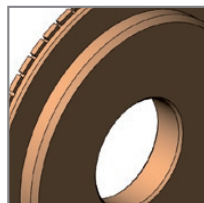
296-256 377-x5



296-256 378-x5



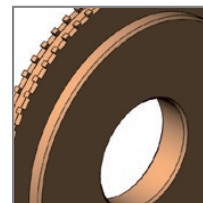
296-256 380-x5



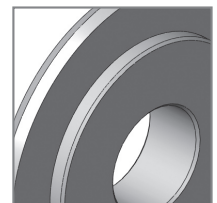
296-256 381-x5



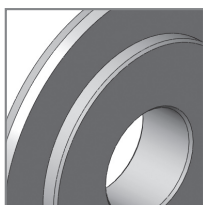
296-256 383-x5



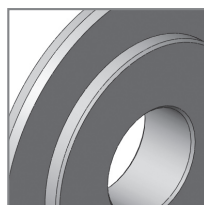
296-256 384-x5



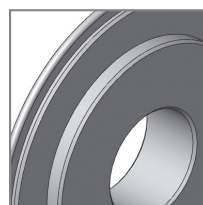
296-256 386-x5 *



296-256 387-x5 *



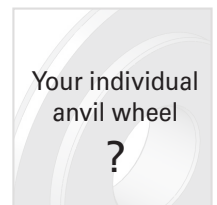
296-256 388-x5 *



296-256 389-x5 *



296-256 390-x5



Your individual
anvil wheel
?



Abbeon Cal, Inc.
Industrial Plastic Working Equipment & Precision Instruments

Abbeon Cal, Inc.,
1363 Donlon Street Unit 1, Ventura, CA 93003-8387
800-922-0977 www.Abbeon.com
E-mail: abbeoncal@abbeon.com