



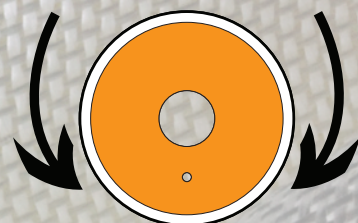
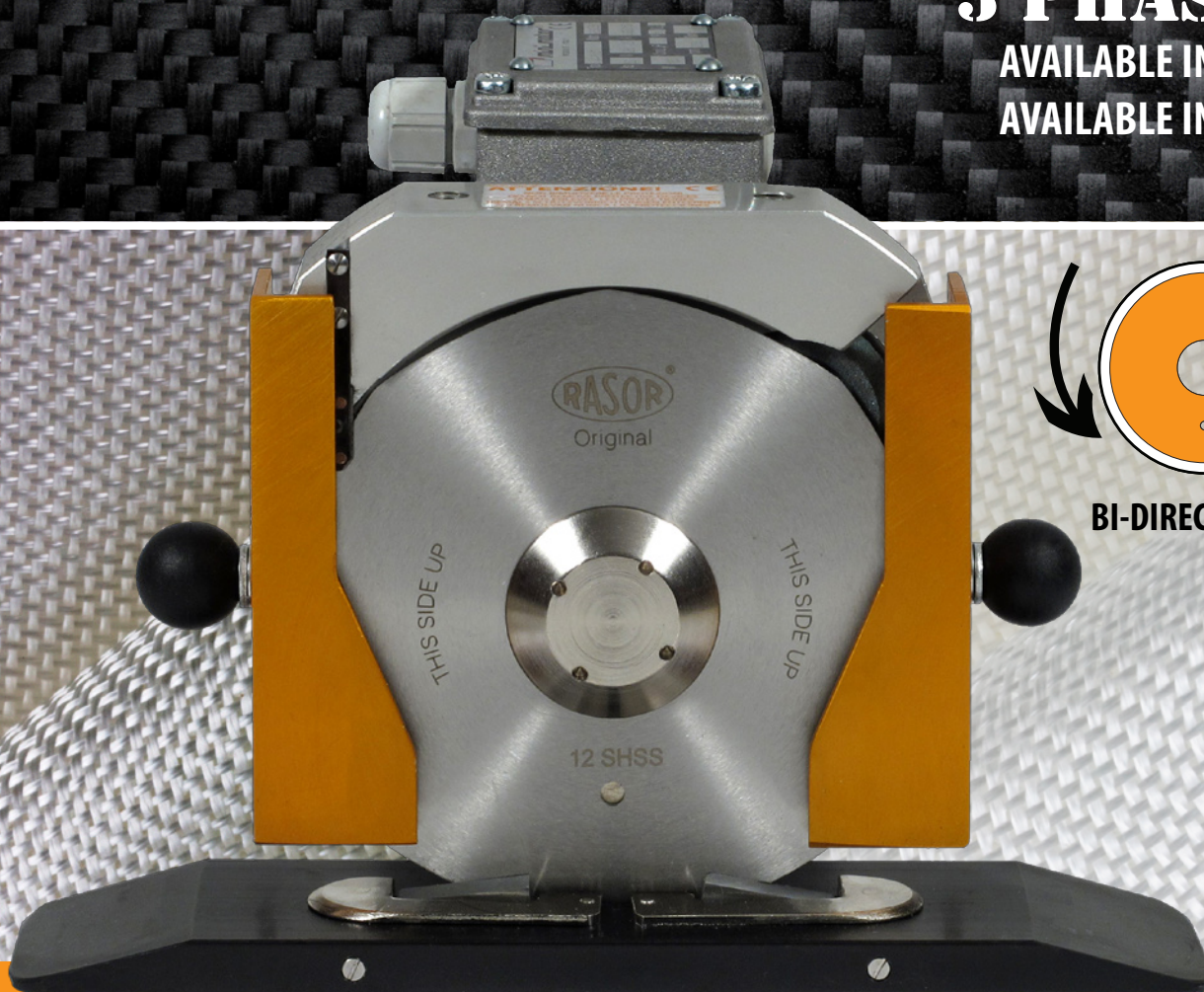
100% MADE IN ITALY

**2014  
SERIES**

**3-PHASES**

AVAILABLE IN 480 V

AVAILABLE IN 60 Hz



**BI-DIRECTIONAL**

**DD120DT**

**ELECTRIC 3-PHASES**

**DIRECT DRIVE BIDIRECTIONAL CUTTING UNIT**



**1946**

DD120DT. Bidirectional Direct Drive professional cutting unit for high-speed cutting processes in Technical Textile & Composite applications.



1946

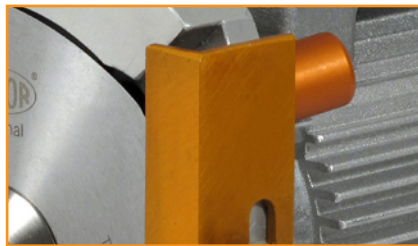
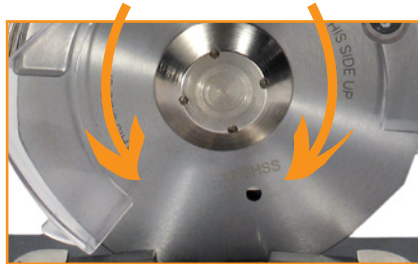
# ELECTRIC 3-PHASES DIRECT DRIVE BIDIRECTIONAL CUTTING UNIT DD120DT

## WHAT'S NEW:

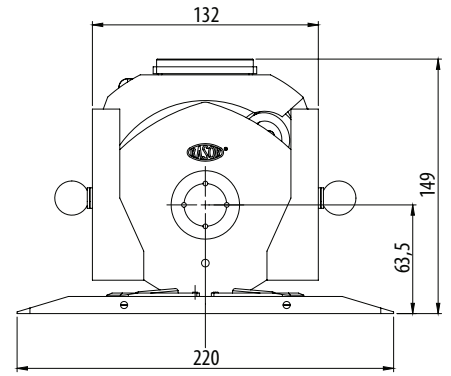
- Save time with bi-directional cutting system
- Direct Drive technology with no gearbox
- High cutting speed
- Low-friction Teflon coated foot
- Easy fixing structure for O.E.M. applications
- Maintenance-free industrial motor

## TECHNICAL DETAILS:

- Blade diameter:** 120 mm (4.7"), with double hard metal counterblade
- Blade equipped:** 12SHSS, 8-edges, HSS steel
- Blade speed:** 2600 r.p.m.
- Cutting ability:** up to 50 mm (2"), bidirectional
- Motor:** 3-phase asynchronous 380/400 V, 50 Hz
- Power:** 180 W
- Max. absorption:** 0.52 A
- Protection:** IP20 - CL F
- Net weight:** 4150 g (with power supply cord)
- Total weight (with packing box):** 5850 g
- Electric cable length:** 1.5 mt (with no plug)
- Minimum brightness for working operations:** LUX 200
- Vibrations at start up:** < 2.5 m/sec 2
- Temperature range:** 0 – 55 C
- Umidity range:** 10 – 95% without condensate



Sharpening device



Dimension layout

## BLADES AVAILABLE:

- 12SHSS**, 120 mm 8-edges, HSS steel | **12CSW**, 120 mm circular, EXTRA steel | **12DHSS**, 120 mm 12-edges, HSS steel | **12SHSSTF**, 120 mm 8-edges, HSS steel Teflon® coated | **12SHSSTN**, 120 mm 8-edges, HSS steel Titanium coated | **12DHSSTN**, 120 mm 12-edges, HSS steel Titanium coated | **12SMD**, 120 mm 8-edges, Carbide (Widia®)



# Abbeon

800.922.0977 or 805.676.0720

Plastic Working Tools and Industrial Supplies

Abbeon Cal, Inc.  
1363 Donlon Street Unit 1,  
Ventura, CA 93003-8387  
www.abbeon.com  
sales@abbeon.com