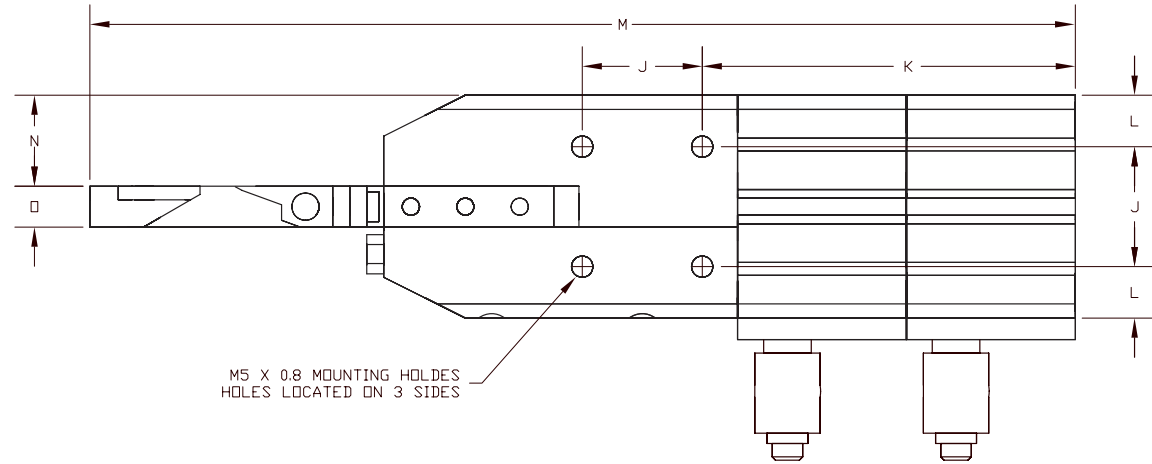
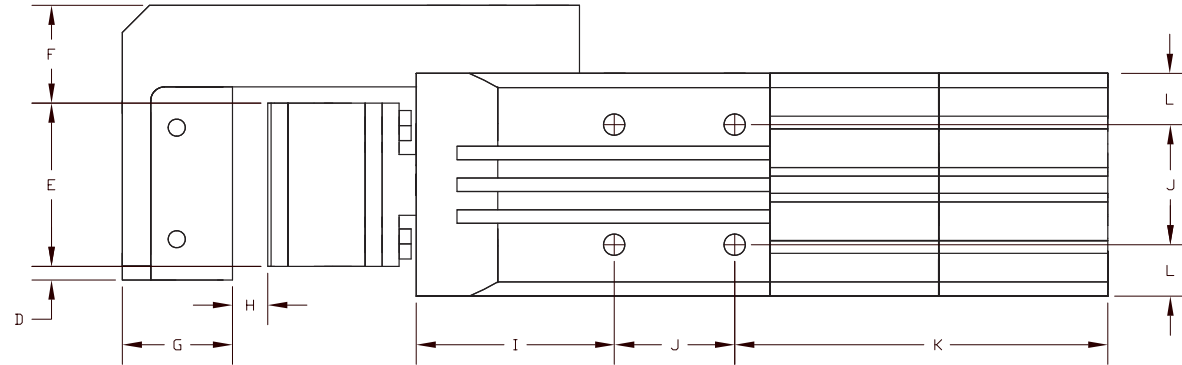
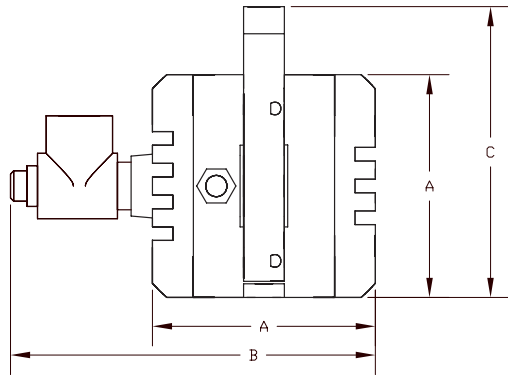
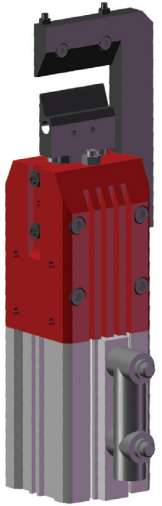


# TC-63L & TC-63R

## THRUST-CUT NIPPER DIMENSIONS



M5 X 0.8 MOUNTING HOLES  
HOLES LOCATED ON 3 SIDES



ALL DIMENSIONS IN MM

MODEL	A	B	C	D	E	F	G	H	I	J	K	L	M	N	O
TC-63	77.0	115	102.0	0	76.2	25.4	32.8	19.0	82.0	34.0	140.7	21.5	332.4	32.2	12.7